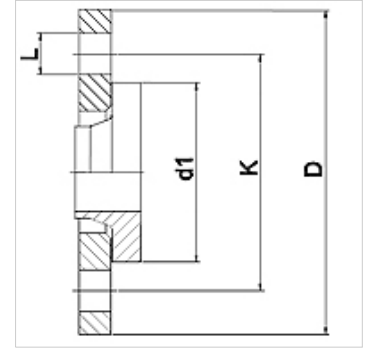


WA LF PN10 VA

Connector ... LF, PN 10, VA

Properties

Application	Connection fitting for metal hoses
Connection 1	Short stub end with loose flange at pressure rating PN10
Sealing form 1	flat sealing
Standard	DIN 2673 DIN EN 1092-1
Application	soldered variant temperature resistant up to 200 °C welded variant in stainless steel temperature resistant up to 550 °C
Construction	straight
Material	Stainless steel collar Stainless steel loose flange



Ordering information

Other designs available on request

Item	Identification	DN	PN (bar)	D (mm)	d1 (mm)	K (mm)	L (mm)
WA 010 LF PN10 VA	10	10	90	40	60	14	
WA 013 LF PN10 VA	13	10	95	45	65	14	
WA 020 LF PN10 VA	20	10	105	58	75	14	
WA 025 LF PN10 VA	25	10	115	68	85	14	
WA 032 LF PN10 VA	32	10	140	78	100	18	
WA 040 LF PN10 VA	40	10	150	88	110	18	
WA 050 LF PN10 VA	50	10	165	102	125	18	
WA 065 LF PN10 VA	65	10	185	122	145	18	
WA 080 LF PN10 VA	80	10	200	138	160	18	
WA 100 LF PN10 VA	100	10	220	158	180	18	
WA 125 LF PN10 VA	125	10	250	188	210	18	
WA 150 LF PN10 VA	150	10	285	212	240	22	

Product versions

WA LF PN10 Connector ... LF, PN 10, steel, Steel collar