

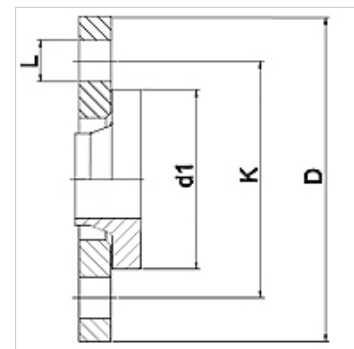
WA LF PN16

Connector ... LF, PN 16, steel

HANSA FLEX

Properties

Application	Connection fitting for metal hoses
Connection 1	Short stub end with loose flange at pressure rating PN16
Sealing form 1	flat sealing
Standard	DIN 2674 DIN EN 1092-1
Application	soldered variant temperature resistant up to 200 °C welded variant in stainless steel temperature resistant up to 550 °C
Construction	straight
Material	Steel collar Steel loose flange



Ordering information

Other designs available on request

Item	DN	PN (bar)	D (mm)	d1 (mm)	K (mm)	L (mm)
WA 010 LF PN16	10	16	90	40	60	14
WA 013 LF PN16	13	16	95	45	65	14
WA 020 LF PN16	20	16	105	58	75	14
WA 025 LF PN16	25	16	115	68	85	14
WA 032 LF PN16	32	16	140	78	100	18
WA 040 LF PN16	40	16	150	88	110	18
WA 050 LF PN16	50	16	165	102	125	18
WA 065 LF PN16	65	16	185	122	145	18
WA 080 LF PN16	80	16	200	138	160	18
WA 100 LF PN16	100	16	220	158	180	18
WA 125 LF PN16	125	16	250	188	210	18
WA 150 LF PN16	150	16	285	212	240	22

Product versions

WA LF PN16 VA Connector ... LF, PN 16, VA, Stainless steel collar