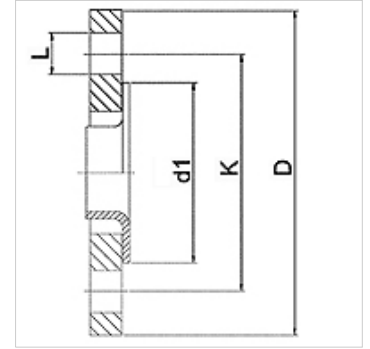


WA LB PN6

Connector ... LB, PN 6, steel

Properties

Application	Connection fitting for metal hoses
Connection 1	Welding neck flange with loose flange at pressure rating PN6
Sealing form 1	flat sealing
Standard	DIN 2641 DIN EN 1092-1
Application	soldered variant temperature resistant up to 200 °C welded variant in stainless steel temperature resistant up to 550 °C
Construction	straight
Material	Stainless steel formed flange Steel loose flange



Ordering information

Other designs available on request

Item	Identification	DN	PN (bar)	D (mm)	d1 (mm)	K (mm)	L (mm)
WA 010 LB PN6		10	6	75	35	50	11
WA 013 LB PN6		13	6	80	40	55	11
WA 020 LB PN6		20	6	90	50	65	11
WA 025 LB PN6		25	6	100	60	75	11
WA 032 LB PN6		32	6	120	70	90	14
WA 040 LB PN6		40	6	130	80	100	14
WA 050 LB PN6		50	6	140	90	110	14
WA 065 LB PN6		65	6	160	110	130	14
WA 080 LB PN6		80	6	190	128	150	18
WA 100 LB PN6		100	6	210	148	170	18
WA 125 LB PN6		125	6	240	178	200	18
WA 150 LB PN6		150	6	265	202	225	18

Product versions

WA LB PN6 VA Connector ... LB, PN 6, VA, Stainless steel formed flange