

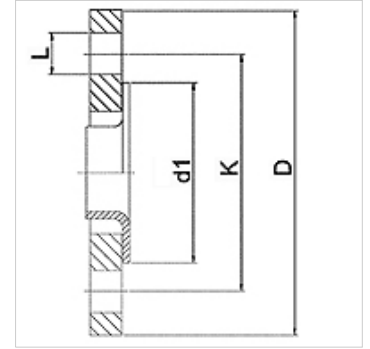
# WA LB PN10

Connector ... LB, PN 10, steel

**HANSA FLEX**

## Properties

<b>Application</b>	Connection fitting for metal hoses
<b>Connection 1</b>	Welding neck flange with loose flange at pressure rating PN10
<b>Sealing form 1</b>	flat sealing
<b>Standard</b>	DIN 2642 DIN EN 1092-1
<b>Application</b>	soldered variant temperature resistant up to 200 °C welded variant in stainless steel temperature resistant up to 550 °C
<b>Construction</b>	straight
<b>Material</b>	Stainless steel formed flange Steel loose flange



## Ordering information

Other designs available on request

Item						
Identification	DN	PN (bar)	D (mm)	d1 (mm)	K (mm)	L (mm)
WA 010 LB PN10	10	10	90	40	60	14
WA 013 LB PN10	13	10	95	45	65	14
WA 020 LB PN10	20	10	105	58	75	14
WA 025 LB PN10	25	10	115	68	85	14
WA 032 LB PN10	32	10	140	78	100	18
WA 040 LB PN10	40	10	150	88	110	18
WA 050 LB PN10	50	10	165	102	125	18
WA 065 LB PN10	65	10	185	122	145	18
WA 080 LB PN10	80	10	200	138	160	18
WA 100 LB PN10	100	10	220	158	180	18
WA 125 LB PN10	125	10	250	188	210	18
WA 150 LB PN10	150	10	285	212	240	22

## Product versions

WA LB PN10 VA Connector ... LB, PN 10, VA, Stainless steel formed flange