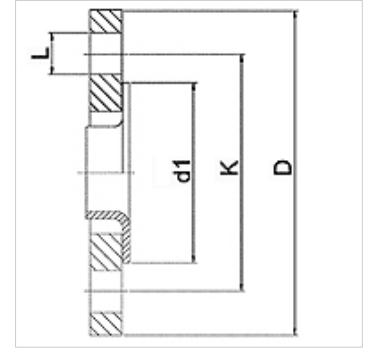


WA LB PN6 VA

Connector ... LB, PN 6, VA

Properties

Application	Connection fitting for metal hoses
Connection 1	Welding neck flange with loose flange at pressure rating PN6
Sealing form 1	flat sealing
Standard	DIN 2641 DIN EN 1092-1
Application	soldered variant temperature resistant up to 200 °C welded variant in stainless steel temperature resistant up to 550 °C
Construction	straight
Material	Stainless steel formed flange Stainless steel loose flange



Ordering information

Other designs available on request

Item						
Identification	DN	PN (bar)	D (mm)	d1 (mm)	K (mm)	L (mm)
WA 010 LB PN6 VA	10	6	75	35	50	11
WA 013 LB PN6 VA	13	6	80	40	55	11
WA 020 LB PN6 VA	20	6	90	50	65	11
WA 025 LB PN6 VA	25	6	100	60	75	11
WA 032 LB PN6 VA	32	6	120	70	90	14
WA 040 LB PN6 VA	40	6	130	80	100	14
WA 050 LB PN6 VA	50	6	140	90	110	14
WA 065 LB PN6 VA	65	6	160	110	130	14
WA 080 LB PN6 VA	80	6	190	128	150	18
WA 100 LB PN6 VA	100	6	210	148	170	18
WA 125 LB PN6 VA	125	6	240	178	200	18
WA 150 LB PN6 VA	150	6	265	202	225	18

Product versions

WA LB PN6 Connector ... LB, PN 6, steel, Stainless steel formed flange