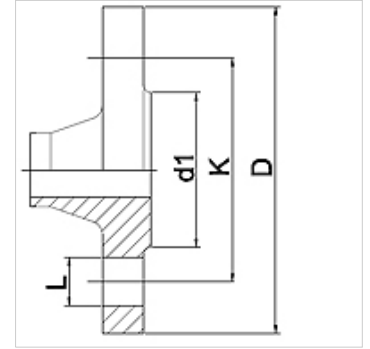


WA LV PN6 VA

Connector ... LV, PN 6, VA

Properties

| | |
|-----------------------|---|
| Application | Connection fitting for metal hoses |
| Connection 1 | Welding neck flange at pressure rating PN6 |
| Sealing form 1 | flat sealing |
| Standard | DIN 2631 DIN EN 1092-1 |
| Application | soldered variant temperature resistant up to 200 °C welded variant in stainless steel temperature resistant up to 550 °C |
| Construction | straight |
| Material | Stainless steel |



Ordering information

Other designs available on request

| Item | | | | | | |
|------------------|-----|----------|--------|---------|--------|--------|
| Identification | DN | PN (bar) | D (mm) | d1 (mm) | K (mm) | L (mm) |
| WA 010 LV PN6 VA | 10 | 6 | 75 | 35 | 50 | 11 |
| WA 013 LV PN6 VA | 13 | 6 | 80 | 40 | 55 | 11 |
| WA 020 LV PN6 VA | 20 | 6 | 90 | 50 | 65 | 11 |
| WA 025 LV PN6 VA | 25 | 6 | 100 | 60 | 75 | 11 |
| WA 032 LV PN6 VA | 32 | 6 | 120 | 70 | 90 | 14 |
| WA 040 LV PN6 VA | 40 | 6 | 130 | 80 | 100 | 14 |
| WA 050 LV PN6 VA | 50 | 6 | 140 | 90 | 110 | 14 |
| WA 065 LV PN6 VA | 65 | 6 | 160 | 110 | 130 | 14 |
| WA 080 LV PN6 VA | 80 | 6 | 190 | 128 | 150 | 18 |
| WA 100 LV PN6 VA | 100 | 6 | 210 | 148 | 170 | 18 |
| WA 125 LV PN6 VA | 125 | 6 | 240 | 178 | 200 | 18 |
| WA 150 LV PN6 VA | 150 | 6 | 265 | 202 | 225 | 18 |

Product versions

WA LV PN6 Connector ... LV, PN 6, steel, Steel