

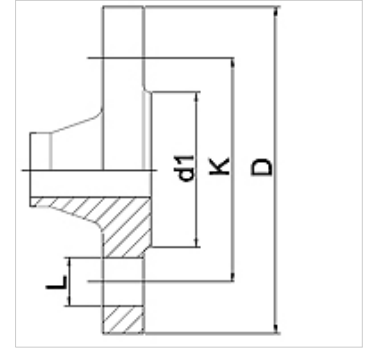
# WA LV PN16

Connector ... LV, PN 16, steel

**HANSA FLEX**

## Properties

<b>Application</b>	Connection fitting for metal hoses
<b>Connection 1</b>	Welding neck flange at pressure rating PN16
<b>Sealing form 1</b>	flat sealing
<b>Standard</b>	DIN 2633 DIN EN 1092-1
<b>Application</b>	soldered variant temperature resistant up to 200 °C welded variant in stainless steel temperature resistant up to 550 °C
<b>Construction</b>	straight
<b>Material</b>	Steel



## Ordering information

Other designs available on request

Item						
Identification	DN	PN (bar)	D (mm)	d1 (mm)	K (mm)	L (mm)
WA 010 LV PN16	10	16	90	40	60	14
WA 013 LV PN16	13	16	95	45	65	14
WA 020 LV PN16	20	16	105	58	75	14
WA 025 LV PN16	25	16	115	68	85	14
WA 032 LV PN16	32	16	140	78	100	18
WA 040 LV PN16	40	16	150	88	110	18
WA 050 LV PN16	50	16	165	102	125	18
WA 065 LV PN16	65	16	185	122	145	18
WA 080 LV PN16	80	16	200	138	160	18
WA 100 LV PN16	100	16	220	158	180	18
WA 125 LV PN16	125	16	250	188	210	18
WA 150 LV PN16	150	16	285	212	240	22

## Product versions

WA LV PN16 VA Connector ... LV, PN 16, VA, Stainless steel