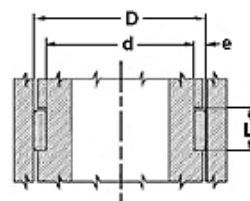


Properties

Sliding speed max.	1,0 m/s
Pressure resistance as DIN 53454 (N/mm ²)	350 N/mm ²
Surface pressure	50 N/mm ²
Temp. min.	-40 °C
Temp. max.	130 °C
Media	Mineral oils Water emulsions
Installation	insert into the groove
Material	Guide ring: Polyester resin - synthetic fibre fabric laminate with graphite



Schnittmöglichkeiten / Cutting options



Toleranz / Tolerance		
D	d	L
H9	f8	+0,20 0

Note

Calculation of shear force; $F = p \times D \times L \times n$

F= maximum shear force (N)

p = maximum surface pressure (N/mm²)

D x L= projected area (mm²)

n= quantity of rings

Description

Available by the metre.

Easy working of the fitting groove and assembly.

Low coefficient of friction.

High load-bearing capacity.

Ordering information

For special operating conditions (fluid, temperature, pressure ...) please contact us.

Item

Identification	e (mm)	e	L (mm)	L
GTH 31 095	3,18	1/8"	9,53	3/8"
GTH 31 127	3,18	1/8"	12,70	1/2"
GTH 31 159	3,18	1/8"	15,87	5/8"
GTH 31 191	3,18	1/8"	19,05	3/4"
GTH 31 254	3,18	1/8"	25,40	1"