

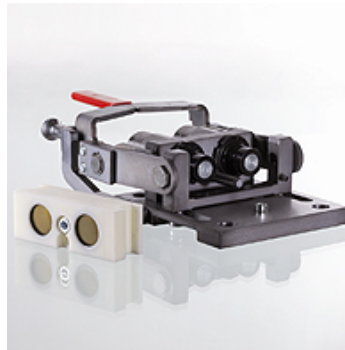
SKM IR FS MULTI FL

Multi-coupling fixed half flat

HANSA FLEX

Properties

Application	construction plant
Connection 1	BSP cylindrical internal threads
Connection 2	Plug in sleeve
Residual pressure:	Coupling under pressure to approx. 200 bar
Design	Multicoupling
Construction type	quick change system, 2 fold
Scope of supply	with weatherproof dust plate
max: Flow	90 L/min
Material	Steel
Surface	Zinc-nickel



Description

extremely flat - optimal mechanics
Stable design, high-strength and hardened materials
Couple with one throw of a lever
Modular construction

Additional information

Multi couplings offer considerable benefits over bundled screw and plug-in couplings:

- Time saving factor due to fast and convenient exchange of add-on parts
- Convenient handling with simultaneous coupling of multiple connections
- Trouble-free coupling even if system pressures are applied
- No confusion between connections, no reversal of flow paths
- Flat seal valves prevent oil leakages, air admittance and allows efficient cleaning even in soiled working environments

Item			
Identification	Connecting thread	Operating pressure (bar)	Size
SKM 20 IR 3 FS MULTI FL	G 3/4" -14	330,0	3