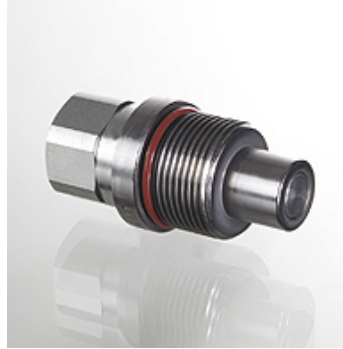


SKF IR FS

Screwed coupling fixed half, flat sealing

Properties

Design	flat sealing
Connection 1	BSP cylindrical internal threads
Sealing form 1	for screw-in pins with shapes A, B and if necessary E
compatible with	Stucchi VEP
Material	Steel
Surface	electro galvanised



Item

Identification	Size	DN*	Connecting thread	Operating pressure (bar)	Mineral oil temp. min. (°C)	Mineral oil temp. max. (°C)
SKF 06 IR 1 FS	1	6	G 1/4" -19	400,0	-25	100
SKF 10 IR 2 FS	2	10	G 3/8" -19	350,0	-25	100
SKF 13 IR 2F S	2	12	G 1/2" -14	350,0	-25	100
SKF 13 IR 3 FS	3	12	G 1/2" -14	350,0	-25	100
SKF 20 IR 3 FS	3	19	G 3/4" -14	350,0	-25	100
SKF 20 IR 4 FS	4	19	G 3/4" -14	350,0	-25	100
SKF 25 IR 4 FS	4	25	G 1" -11	325,0	-25	100
SKF 25 IR 5 FS	5	25	G 1" -11	325,0	-25	100
SKF 32 IR 5 FS	5	31	G 1.1/4" -11	300,0	-25	100

DN = Nominal diameter, nominal width

Accessories

SKF ZUBS FS ALU	Dust protector for SKF FS
-----------------	---------------------------