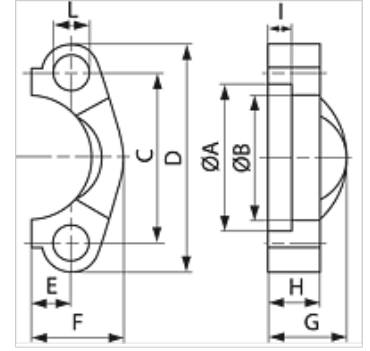


FH (6000 PSI)

SAE flange half

Properties

Pressure series	6000 psi
Design	SAE flange half
Standard	SAE J518, ISO 6162-1 /-2
Scope of supply	flange only
Material	Steel
Surface	electro galvanised
Mounting	Screw bore hole



Note

Recommended screws are listed in the columns M (metr) and M (unc).

Item

Identification	PB 10.9 (bar)	Size	A (mm)	B (mm)	C (mm)	D (mm)	E (mm)	F (mm)	G (mm)	H (mm)	I (mm)	L (mm)	M metr.	M unc
FH 6001	400	1/2"	32,5	24,6	40,5	56	9,1	23,6	22	16	7,2	8,7	M 8 x 30	5/16" x 1.1/4"
FH 6002	400	3/4"	42,1	32,5	50,8	71	11,9	30,0	28	19	8,3	10,7	M 10 x 35	3/8" x 1.1/2"
FH 6003	400	1"	48,4	38,9	57,2	81	13,9	34,8	33	24	9,0	13,0	M 12 x 45	-
FH 6013	400	1"	48,4	38,9	57,2	81	13,9	34,8	33	24	9,0	12,0	-	7/16" x 1.3/4"
FH 6004	400	1.1/4"	54,8	44,5	66,7	95	15,9	38,6	38	27	9,8	14,7	M 14 x 45	-
FH 6044	400	1.1/4"	54,8	44,5	66,7	95	15,9	38,6	38	27	9,8	13,5	-	1/2" x 1.3/4"
FH 6005	400	1.1/2"	64,3	51,6	79,4	113	18,3	47,5	43	30	12,1	17,0	M 16 x 55	5/8" x 2"
FH 6006	400	2"	80,2	67,6	96,8	133	22,2	56,9	52	37	12,1	21,0	M 20 x 70	3/4" x 2.1/2"

Ø = External pipe diameter – Series: LL = Very light L = Light S = Heavy – PN = Nominal pressure PB = Max. operating pressure

Product versions

SFH (3000 PSI / 6000 PSI) VA SAE flange half, Stainless steel

Accessories

AFS SCHR M	Metric screw set, hexagon socket
AFS SCHR U	UNC screw set, hexagon socket
AFS SCHRAUBE	Hexagon socket screw