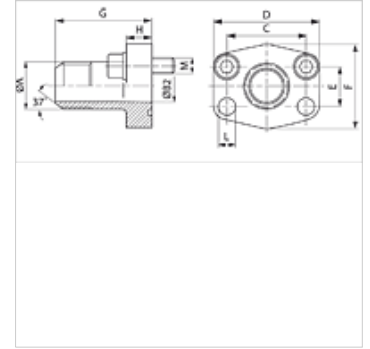


# AFG JIC (6000 PSI)

## SAE external thread flange

### Properties

<b>Pressure series</b>	6000 psi
<b>Standard</b>	SAE J 518 C ISO 6162
<b>Construction</b>	straight
<b>Design</b>	SAE external thread flange
<b>Mounting</b>	Screw bore hole
<b>Scope of supply</b>	flange only
<b>Material</b>	S355J2G3 (ST52.3)
<b>Surface</b>	black oiled



### Note

The stated maximum working pressure relates to the flange. The actual working pressure is determined by the pipe (wall thickness) and the quality of the pipe.

Recommended screws are listed in the columns M (metr) and M (unc).

### Item

Identification	PB 10.9 (bar)	Size	A	Ø B (mm)	C (mm)	D (mm)	E (mm)	F (mm)	G (mm)	H (mm)	L (mm)	M metr.	M unc
<b>AFG 401 JIC 3/4</b>	400	1/2"	UNF 3/4" -16	9,9	40,5	56	18,2	48	60	16	9,0	M 8 x 30	5/16" x 1.1/4"
<b>AFG 401 JIC 7/8</b>	400	1/2"	UNF 7/8" -14	12,3	40,5	56	18,2	48	60	16	9,0	M 8 x 30	5/16" x 1.1/4"
<b>AFG 402 JIC 1 1/16</b>	400	3/4"	UNF 1 1/16" -12	15,5	50,8	71	23,8	60	73	19	11,5	M 10 x 35	3/8" x 1.1/2"
<b>AFG 403 JIC 1 5/16</b>	400	1"	UN 1.5/16" -12	21,5	57,2	81	27,8	70	82	24	13,0	M 12 x 45	7/16" x 1.3/4"
<b>AFG 404 JIC 1 5/16</b>	400	1.1/4"	UN 1.5/16" -12	21,5	66,7	95	31,8	78	92	27	*1	M 14 x 50	1/2" x 1.3/4"
<b>AFG 404 JIC 1 5/8</b>	400	1.1/4"	UN 1.5/8" -12	27,5	66,7	95	31,8	78	92	27	*1	M 14 x 50	1/2" x 1.3/4"
<b>AFG 405 JIC 1 7/8</b>	400	1.1/2"	UN 1.7/8" -12	33,0	79,4	113	36,5	95	96	30	17,5	M 16 x 50	5/8" x 2"

Series: LL = Very light L = Light S = Heavy – Ø = External pipe diameter – PN = Nominal pressure PB = Max. operating pressure

\*1) = 15.0 for metric screws; 13.5 for UNC screws

### Product versions

<b>AFG JIC U (3000 / 6000 PSI)</b>	SAE external thread flange, with UNC screw set and O-ring
<b>AFG JIC M (3000 / 6000 PSI)</b>	SAE external thread flange, with metric screw set and O-ring