

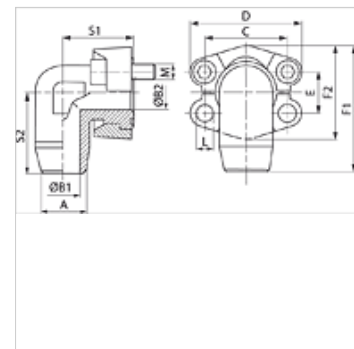
WFS (6000 PSI)

SAE flange adapter, welded on, angle 90°

HANSA FLEX

Properties

Pressure series	6000 psi
Standard	SAE J 518 C ISO 6162
Construction	Angle 90°
Design	SAE flange adapter welded on connecting piece
Scope of supply	flange only
Material	S355J2G3 (ST52.3)
Surface	black oiled



Note

In accordance with SAE J 518 C, the specified nominal pressure is defined by the flange or based on the pipe to be welded on.

Item

Identification	PB 10.9 (bar)	Size	A (mm)	B1 (mm)	B2 (mm)	C (mm)	D (mm)	E (mm)	F1 (mm)	F2 (mm)	S1 (mm)	S2 (mm)	L (mm)
WFS 6001-16	400	1/2"	16	10	10	40,5	56,0	18,2	61,6	47,2	39	38	8,7
WFS 6002-16	400	3/4"	16	10	17	50,8	71,0	23,8	78,0	60,0	48	48	10,7
WFS 6002-20	400	3/4"	20	12	17	50,8	71,0	23,8	78,0	60,0	48	48	10,7
WFS 6002-25	400	3/4"	25	15	17	50,8	71,0	23,8	78,0	60,0	48	48	10,7
WFS 6003-25	400	1"	25	15	20	57,2	81,0	27,8	94,0	69,6	60	60	*1
WFS 6003-30	400	1"	30	22	25	57,2	81,0	27,8	94,0	69,6	60	60	*1
WFS 6004-30	315	1.1/4"	30	22	27	66,7	95,0	31,8	106,6	77,2	68	68	*2
WFS 6004-38	315	1.1/4"	38	28	30	66,7	95,0	31,8	106,6	77,2	68	68	*2
WFS 6005-38	315	1.1/2"	38	28	32	79,4	113,0	36,5	123,5	95,0	76	76	17,0

PN = Nominal pressure PB = Max. operating pressure

*1) = Choice of 12.0 or 12.5 – *2) = Choice of 13.5 or 14.5

Product versions

WFS M (3000 / 6000 PSI)	SAE flange adapter, welded on, angle 90°, with 2 flange halves, screw set and O-ring
WFS U (3000 / 6000 PSI)	SAE flange adapter, welded on, angle 90°, with 2 flange halves, screw set and O-ring