

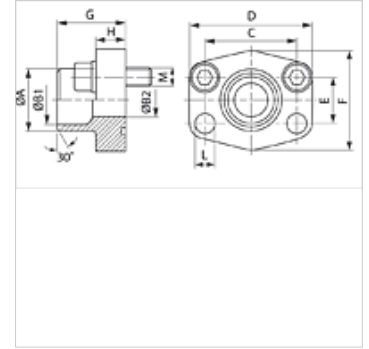
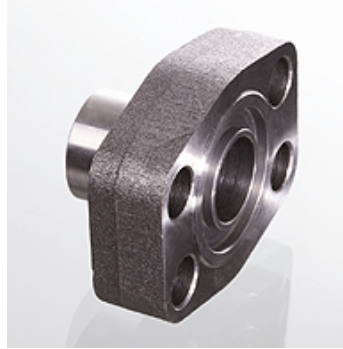
AFS SRE (6000 PSI)

SAE stub end

HANSA FLEX

Properties

Pressure series	6000 psi
Standard	SAE J 518 C ISO 6162
Construction	straight
Design	SAE stub end
Mounting	Screw bore hole
Scope of supply	flange only
Material	S355J2G3 (ST52.3)
Surface	black oiled



Note

The stated maximum working pressure relates to the flange. The actual working pressure is determined by the pipe (wall thickness) and the quality of the pipe.

Recommended screws are listed in the columns M (metr) and M (unc).

Item

Identification	PB 10.9 (bar)	Size	Pipe	A (mm)	B1 (mm)	B2 (mm)	G (mm)	C (mm)	E (mm)	H (mm)	L (mm)	M metr.	M unc
AFS 401 SRE 20	400	1/2"	20 x 3	20	14,0	14	34,0	40,5	18,2	16,0	9,0	M 8 x 30	5/16" x 1.1/4"
AFS 402 SRE 20	400	3/4"	20 x 3	20	14,0	14	35,0	50,8	23,8	21,0	11,0	M 10 x 35	3/8" x 1.1/2"
AFS 402 SRE 25	400	3/4"	25 x 4	25	17,0	17	35,0	50,8	23,8	21,0	11,0	M 10 x 35	3/8" x 1.1/2"
AFS 403 SRE 25	400	1"	25 x 4	25	17,0	17	42,0	57,2	27,8	25,0	13,0	M 12 x 45	7/16" x 1.1/2"
AFS 403 SRE 30	400	1"	30 x 4	30	22,0	22	42,0	57,2	27,8	25,0	13,0	M 12 x 45	7/16" x 1.1/2"
AFS 404 SRE 30	400	1.1/4"	30 x 4	30	22,0	22	44,0	66,7	31,8	25,0	15,0	M 14 x 50	1/2" x 1.3/4"
AFS 404 SRE 38	400	1.1/4"	38 x 6	38	26,0	26	44,0	66,7	31,8	25,0	15,0	M 14 x 50	1/2" x 1.3/4"
AFS 405 SRE 38	400	1.1/2"	38 x 6	38	26,0	26	56,0	49,4	36,5	28,0	17,0	M 16 x 50	5/8" x 2"
AFS 405 SRE 48	400	1.1/2"	48.3 x 8	49	32,0	32	56,0	79,4	36,5	28,0	17,0	M 16 x 50	5/8" x 2"
AFS 405 SRE 60	400	1.1/2"	60.3 x 10	61	40,0	40	56,0	79,4	36,5	27,0	17,0	M 16 x 50	5/8" x 2"
AFS 406 SRE 60	400	2"	60.3 x 10	61	40,0	40	65,0	96,8	44,5	37,0	21,0	M 20 x 70	3/4" x 2.1/2"
AFS 406 SRE 76	400	2"	76.1 x 12.5	76	50,0	48	80,0	96,8	44,5	33,0	21,0	M 20 x 65	3/4" x 2.1/2"

PN = Nominal pressure PB = Max. operating pressure

Product versions

AFS SRE M (3000 / 6000 PSI) SAE stub end, with metric screw set and O-ring

AFS SRE U (3000 / 6000 PSI) SAE stub end, with UNC screw set and O-ring