

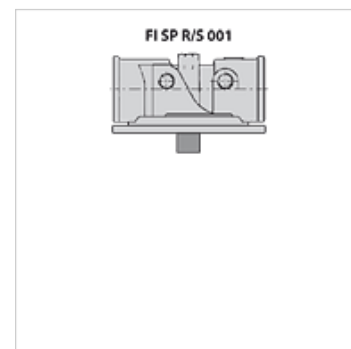
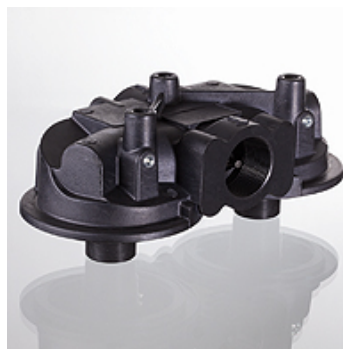
FI SP R/S FK

Filter head for spin-on return flow filter / suction filter

HANSA FLEX

Properties

Material Aluminium



Description

With these filter heads, spin-on filters can be used as return flow filters (R) or suction filters (S)

Opening pressure of bypass valve for return filter (R): 1.75 bar

Opening pressure of bypass valve for suction filter (S): 0.3 bar

Item

| Identification | for filter type | Line connection | Design | Weight (kg) |
|-------------------------|--|-----------------------|-------------------|-------------|
| FI SP R FK 001 G3/4 | FI SP R 1 (R) with G 3/4" connection | G 3/4" | as return filter | 0,36 |
| FI SP R FK 001 G1 1/4 | FI SP R 1 (R) with G 1 1/4" connection | G 1.1/4" | as return filter | 1,00 |
| FI SP R FK 002 G1 1/2 | FI SP R 2 (R) with G 1 1/2" connection | G 1.1/2" | as return filter | 1,22 |
| FI SP R FK 003 G1 1/2 | FI SP R 3 (R) with G 1 1/2" connection | G 1.1/2" | as return filter | 2,86 |
| FI SP R FK 003 SAE1 1/2 | FI SP R 3 (R) with SAE 1 1/2" connection | 1.1/2" SAE 3000 PSI/M | as return filter | 2,86 |
| FI SP S FK 001 G3/4 | FI SP R 1 (S) with G 3/4" connection | G 3/4" | as suction filter | 0,36 |
| FI SP S FK 001 G1 1/4 | FI SP R 1 (S) with G 1 1/4" connection | G 1.1/4" | as suction filter | 0,50 |
| FI SP S FK 002 G1 1/2 | FI SP R 2 (S) with G 1 1/2" connection | G 1.1/2" | as suction filter | 1,22 |
| FI SP S FK 003 G1 1/2 | FI SP R 3 (S) with G 1 1/2" connection | G 1.1/2" | as suction filter | 2,86 |
| FI SP S FK 003 SAE1 1/2 | FI SP R 3 (S) with SAE 1 1/2" connection | 1.1/2" SAE 3000 PSI/M | as suction filter | 2,86 |

Spare part for following products

| | |
|-----------|-----------------------------------|
| FI SP R 1 | Spin-on return flow filter type 1 |
| FI SP R 2 | Spin-on return flow filter type 2 |
| FI SP R 3 | Spin-on return flow filter type 3 |

Additional elements

| | |
|------------|--------------------------------------|
| FI SP E MP | Filter element for spin-on filter MP |
|------------|--------------------------------------|