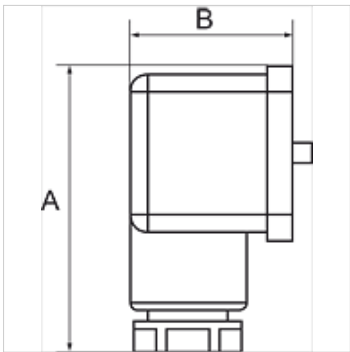


K-DRS ELK ANSCHLUSS M VAKUUM

Pressure switches, electrical connection M 12 x 1



Properties	
Application	Pneumatic applications
Switching frequency	200/min.
Switching voltage	max. 250 V AC / 28 V DC
Adjustment range	-0.85 / +1 bar
Protection IP	IP 65 (DIN 43650), IP 67 (M 12 x 1)
Temp. range	-10 °C to +80 °C
Setting cap	Aluminium, powder-coated
Housing	Special die-cast material
Diaphragm, seal	Perbunan



Note

Further information on request

Description

For converting pneumatic to electrical signals. Designed for use in rough vacuum applications (technical vacuum). Universal switch type, suitable as NC, NO or changeover contact. These devices are free from paint-wetting impairment substances (PWIS).

Item			
Identification	Connection	A (mm)	B (mm)
K- 07 30 28 52	Flange	48,0	28,0
K- 07 30 28 54	G 1/4	48,0	28,0