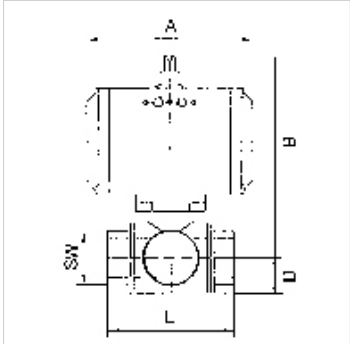


K-3 BKR STELLANTR E L MS

Brass ball valves, 3-way, with single-acting actuator, L-bore



Properties	
Design	Pneumatic actuators, in double- or single acting version, with integrated end-position feedback
Bore	L shaped
Operating temperature	-20 °C to +70 °C
Angle of rotation	90 °
Pilot pressure	5.5 bar
Valve adapter	Supplied as standard
Drive	aluminium eloxed
Drive seal	NBR
Ball valve	Chrome-plated brass, with ISO-flange plate
Ball valve seal	PTFE/FKM



Note
G thread acc. to DIN EN ISO 228-1, with ISO flange plate (acc. to ISO 5211)
Further information on request

Description
3-way cock, L-bore, full bore

Additional information
Other T-positions on request

Item									
Identification	DN	Thread	Position	PN (bar)	A (mm)	B (mm)	D (mm)	L (mm)	AF (mm)
K- 07 30 02 90	15	Rp 1/2	L	40	133,0	142,0	20,0	64,5	25
K- 07 30 02 91	25	Rp 1	L	40	133,0	150,5	30,0	97,0	41
K- 07 30 02 92	40	Rp 1 1/2	L	25	180,0	193,5	43,0	135,0	55