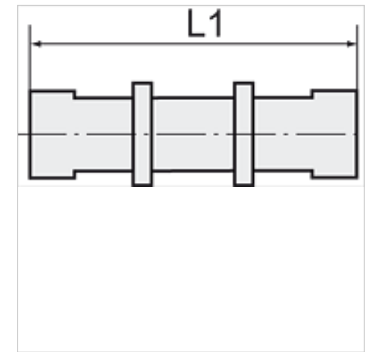
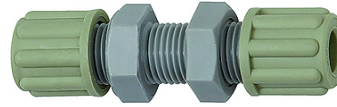


K-SCHOTTVERBINDUNGEN

Bulkhead couplings

Properties

Operating pressure	Dependent on operating temperature; Max. 10 bar (at 20 °C); Max. 1 bar (at 60 °C)
Threaded connection body	Polyamide (PA)
Clamp ring	Polypropylene (PP)
Nut	Polypropylene (PP)



Note

Further information on request

Description

Manufactured from high impact-resistant, UV-stabilised engineering plastic, extremely resistant to weathering. Good chemical resistance to benzene, diesel oil, fuel oil and alkalis.
Not suitable for use with acids.

Item

Identification	Thread	for hose	L1 (mm)	AF
K- 07 40 32 74	M 10 x 1	4 mm / 6 mm	53,0	14 mm
K- 07 40 32 75	M 14 x 1.5	6 mm / 8 mm	64,0	19 mm
K- 07 40 32 76	M 16 x 1.5	8 mm / 10 mm	73,0	22 mm
K- 07 40 32 77	M 18 x 1.5	9 mm / 12 mm	84,0	24 mm