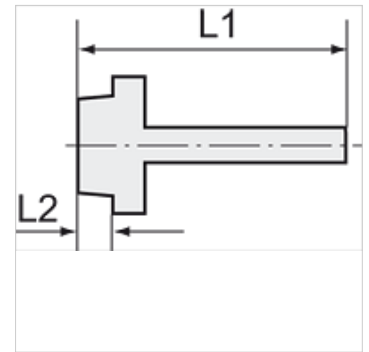
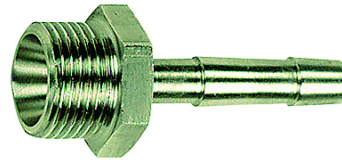


K-TR AG

Male hose fittings with parallel male thread

Properties

Working pressure	Max. 20 bar
Material	Stainless steel 1.4571



Note

The dimensions of the standard screw fittings may change slightly during the life of the catalogue as a result of optimisation processes. Further information on request

Additional information

Further types and dimensions on request.

Item

Identification	Thread	for hose	L1 (mm)	L2 (mm)	AF
K- 07 40 13 26	M 5	LW 4 mm	15,5	5,0	8 mm
K- 07 40 49 69	M 5	LW 6 mm	23,5	5,0	9 mm
K- 07 40 13 27	G 1/8	LW 4 mm	41,5	9,0	14 mm
K- 07 40 13 28	G 1/8	LW 6 mm	41,5	9,0	14 mm
K- 07 40 49 71	G 1/8	LW 8 mm	36,0	7,0	14 mm
K- 07 40 13 29	G 1/8	LW 9 mm	48,5	10,0	17 mm
K- 07 40 13 12	G 1/4	LW 4 mm	48,5	10,0	17 mm
K- 07 40 13 13	G 1/4	LW 6 mm	48,5	10,0	17 mm
K- 07 40 49 17	G 1/4	LW 8 mm	39,0	9,0	17 mm
K- 07 40 49 21	G 1/4	LW 10 mm	39,0	9,0	17 mm
K- 07 40 13 15	G 1/4	LW 9 mm	48,5	10,0	17 mm
K- 07 40 13 14	G 1/4	LW 13 mm	48,5	10,0	19 mm
K- 07 40 13 16	G 3/8	LW 4 mm	48,5	10,0	19 mm
K- 07 40 13 17	G 3/8	LW 6 mm	48,5	10,0	19 mm
K- 07 40 49 27	G 3/8	LW 8 mm	39,0	9,0	19 mm
K- 07 40 13 19	G 3/8	LW 9 mm	48,5	10,0	19 mm
K- 07 40 49 30	G 3/8	LW 10 mm	39,0	9,0	19 mm
K- 07 40 13 18	G 3/8	LW 13 mm	48,5	10,0	19 mm
K- 07 40 13 20	G 1/2	LW 6 mm	48,5	10,0	24 mm
K- 07 40 49 37	G 1/2	LW 8 mm	42,0	11,0	24 mm
K- 07 40 13 21	G 1/2	LW 9 mm	48,5	10,0	24 mm
K- 07 40 49 40	G 1/2	LW 10 mm	42,0	11,0	24 mm
K- 07 40 13 22	G 1/2	LW 13 mm	50,0	10,0	24 mm
K- 07 40 49 43	G 1/2	LW 16 mm	53,0	11,0	24 mm
K- 07 40 49 44	G 1/2	LW 19 mm	53,0	11,0	24 mm
K- 07 40 13 23	G 3/4	LW 9 mm	50,5	11,0	27 mm
K- 07 40 13 24	G 3/4	LW 13 mm	52,0	11,0	27 mm
K- 07 40 13 25	G 3/4	LW 19 mm	50,5	11,0	27 mm
K- 07 40 49 57	G 1	LW 19 mm	55,0	13,0	38 mm
K- 07 40 49 58	G 1	LW 25 mm	55,0	13,0	38 mm
K- 07 40 49 67	G 1	LW 32 mm	55,0	13,0	38 mm