

K-SCHOTTNIPPEL ES

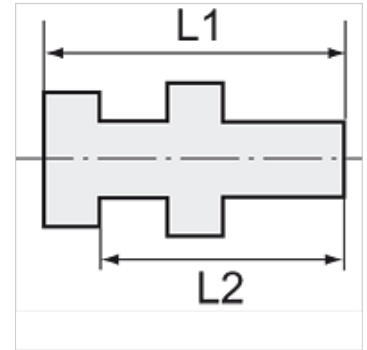
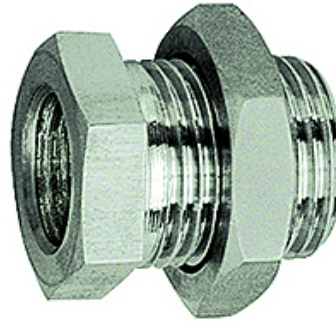
Bulkhead nipples

HANSA FLEX

Properties

Working pressure Max. 20 bar

Material Stainless steel 1.4571



Note

The dimensions of the standard screw fittings may change slightly during the life of the catalogue as a result of optimisation processes.
Further information on request

Additional information

Further types and dimensions on request.

Item

| Identification | Male thread | Female thread | L1 (mm) | L2 (mm) | AF1 (mm) | AF2 (mm) |
|----------------|-------------|---------------|------------|------------|-------------|-------------|
| K- 07 40 34 24 | G 1/4 | G 1/8 | 18,0 | 14,0 | 17 | 17 |
| K- 07 40 34 25 | G 3/8 | G 1/4 | 22,0 | 17,0 | 19 | 24 |
| K- 07 40 34 26 | G 1/2 | G 3/8 | 27,0 | 21,0 | 24 | 24 |