

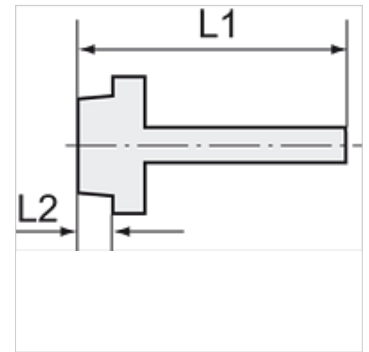
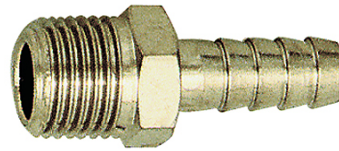
K-TR AG-K MS NI

Male hose fittings, conical male thread - nickel-plated brass

HANSA FLEX

Properties

Operating temperature	Max. 150 °C
Pressure	Max. 60 bar
Material	Nickel-plated brass



Note

The dimensions of the standard screw fittings may change slightly during the life of the catalogue as a result of optimisation processes. Further information on request

Description

Suitable for air, water, oil, steam, etc.

Additional information

Further types and dimensions on request.

Item	Identification	Thread	for hose	L1 (mm)	L2 (mm)	AF
	K- 07 40 13 44	R 1/8	LW 6 mm	31,5	8,0	12 mm
	K- 07 40 13 45	R 1/8	LW 8 mm	31,5	8,0	12 mm
	K- 07 40 13 46	R 1/8	LW 9 mm	31,5	8,0	12 mm
	K- 07 40 13 47	R 1/8	LW 10 mm	32,5	8,0	12 mm
	K- 07 40 13 48	R 1/4	LW 6 mm	35,0	11,0	14 mm
	K- 07 40 13 49	R 1/4	LW 8 mm	35,0	11,0	14 mm
	K- 07 40 13 50	R 1/4	LW 9 mm	35,0	11,0	14 mm
	K- 07 40 13 51	R 1/4	LW 10 mm	36,0	11,0	14 mm
	K- 07 40 13 52	R 1/4	LW 12 mm	36,0	11,0	14 mm
	K- 07 40 49 75	R 1/4	LW 13 mm	39,5	11,5	14 mm
	K- 07 40 13 53	R 3/8	LW 9 mm	35,5	11,5	17 mm
	K- 07 40 13 54	R 3/8	LW 10 mm	36,5	11,5	17 mm
	K- 07 40 13 55	R 3/8	LW 12 mm	36,5	11,5	17 mm
	K- 07 40 49 77	R 3/8	LW 13 mm	41,0	13,0	17 mm
	K- 07 40 13 56	R 1/2	LW 9 mm	38,5	14,0	22 mm
	K- 07 40 13 57	R 1/2	LW 10 mm	39,5	14,0	22 mm
	K- 07 40 13 58	R 1/2	LW 12 mm	39,5	14,0	22 mm
	K- 07 40 49 78	R 1/2	LW 13 mm	44,5	15,5	22 mm
	K- 07 40 49 79	R 1/2	LW 16 mm	44,5	15,5	22 mm
	K- 07 40 49 80	R 1/2	LW 19 mm	44,5	15,5	22 mm