

K-TR AG OR MS NI

Male hose fittings, parallel, with O-ring - nickel-plated brass

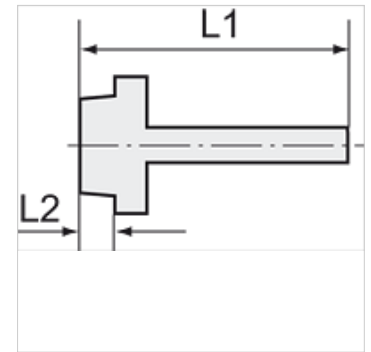
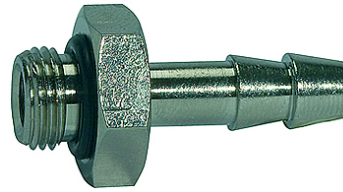
HANSA FLEX

Properties

Operating temperature Max. 80 °C (with O-ring, NBR)

Pressure Max. 60 bar

Material Nickel-plated brass



Note

The dimensions of the standard screw fittings may change slightly during the life of the catalogue as a result of optimisation processes. Further information on request

Description

Suitable for air, water, oil, steam, etc.

Additional information

Further types and dimensions on request.

Item	Identification	Thread	for hose	L1 (mm)	L2 (mm)	AF
	K- 07 40 13 59	G 1/8	LW 6 mm	30,0	6,5	14 mm
	K- 07 40 13 60	G 1/8	LW 8 mm	31,0	6,0	15 mm
	K- 07 40 13 61	G 1/8	LW 9 mm	31,0	6,0	15 mm
	K- 07 40 13 62	G 1/4	LW 6 mm	32,0	8,0	17 mm
	K- 07 40 13 63	G 1/4	LW 9 mm	33,0	8,0	18 mm
	K- 07 40 13 64	G 1/4	LW 12 mm	33,0	8,0	18 mm
	K- 07 40 49 89	G 1/4	LW 8 mm	32,0	8,0	17 mm
	K- 07 40 49 90	G 1/4	LW 10 mm	33,0	8,0	17 mm
	K- 07 40 49 96	G 1/4	LW 13 mm	33,0	8,0	18 mm
	K- 07 40 49 97	G 3/8	LW 6 mm	33,0	9,0	20 mm
	K- 07 40 49 98	G 3/8	LW 8 mm	33,0	9,0	20 mm
	K- 07 40 13 65	G 3/8	LW 9 mm	34,0	9,0	21 mm
	K- 07 40 49 91	G 3/8	LW 10 mm	34,0	9,0	20 mm
	K- 07 40 13 66	G 3/8	LW 12 mm	34,0	9,0	21 mm
	K- 07 40 49 92	G 3/8	LW 13 mm	34,0	9,0	21 mm
	K- 07 40 13 67	G 1/2	LW 12 mm	36,0	11,0	26 mm
	K- 07 40 49 93	G 1/2	LW 13 mm	36,0	10,0	24 mm
	K- 07 40 49 94	G 1/2	LW 16 mm	40,0	10,0	25 mm
	K- 07 40 49 95	G 1/2	LW 19 mm	40,0	10,0	24 mm