

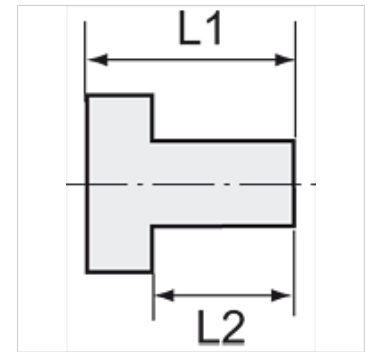
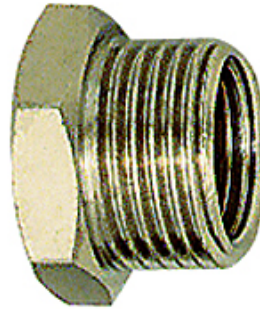
K-RD NIPPEL MS NI

Reducing nipples - nickel-plated brass



Properties

Operating temperature	Max. 150 °C
Pressure	Max. 60 bar
Material	Nickel-plated brass



Note

The dimensions of the standard screw fittings may change slightly during the life of the catalogue as a result of optimisation processes.
Further information on request

Description

Suitable for air, water, oil, steam, etc.

Additional information

Further types and dimensions on request.

Item					
Identification	Male thread	Female thread	L1 (mm)	L2 (mm)	AF
K- 07 40 15 76	G 1/8	M 5	10,5	6,0	14 mm
K- 07 40 15 77	G 1/4	G 1/8	13,0	8,0	17 mm
K- 07 40 15 81	G 3/8	G 1/8	14,0	9,0	20 mm
K- 07 40 15 78	G 3/8	G 1/4	14,0	9,0	20 mm
K- 07 40 15 83	G 1/2	G 1/8	15,5	10,0	24 mm
K- 07 40 15 82	G 1/2	G 1/4	15,5	10,0	25 mm
K- 07 40 15 79	G 1/2	G 3/8	15,5	10,0	25 mm
K- 07 40 15 84	G 3/4	G 3/8	17,5	11,0	30 mm
K- 07 40 15 85	G 3/4	G 1/2	17,5	11,0	30 mm
K- 07 40 15 86	G 1	G 1/2	19,0	12,0	36 mm
K- 07 40 15 87	G 1	G 3/4	19,0	11,5	36 mm