

K-SCHOTTNIPPEL MS

Bulkhead nipples

HANSA FLEX

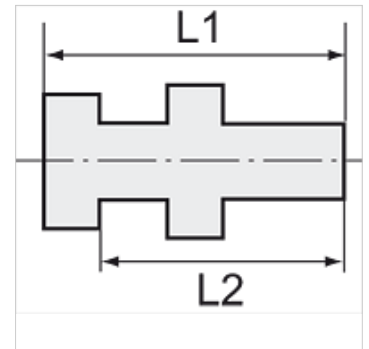
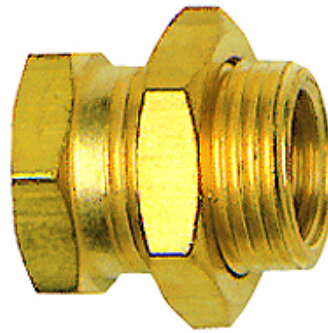
Properties

Working pressure 10 bar

Media temperature max. +90 °C

Ambient temperature Max. +90 °C

Material Brass



Note

The dimensions of the standard screw fittings may change slightly during the life of the catalogue as a result of optimisation processes.
Further information on request

Additional information

Further types and dimensions on request.

Item

Identification	Male thread	Female thread	L1 (mm)	L2 (mm)	AF1 (mm)	AF2 (mm)
K- 07 40 34 31	G 1/8	M 5	15,0	11,5	14	14
K- 07 40 34 32	G 1/4	G 1/8	18,0	14,0	17	17
K- 07 40 34 33	G 3/8	G 1/4	22,0	17,0	19	22
K- 07 40 34 34	G 1/2	G 3/8	27,0	21,0	24	24