

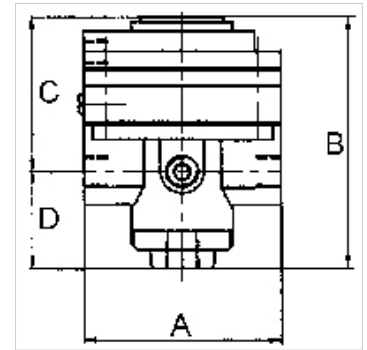
K-PRAEZI DRUCKREGL PNEU FERN

Precision pressure regulators

HANSA FLEX

Properties

| | |
|--------------------------|---|
| Input pressure | Max. 16 bar |
| Media temperature | max. 60 °C |
| Ambient temperature | Max. 60 °C |
| Media | Micro-filtered, unoled compressed air (0.01 µm) |
| Port for pressure gauge | G 1/4 |
| Flow rate | 3000 l/min |
| Vent port | G 3/8 (for mounting a silencer) |
| Pilot pressure | Max. 10 bar |
| Control air port | G 1/8 |
| Sealant | NBR |
| Housing | Die-cast zinc, painted black |
| Internal air consumption | 6 l/min at Pin = 16 bar |



Note

Attention! A set of wearing parts cannot be supplied! These pressure regulators may only be opened in the factory! The given flow rates are based on the following parameters: 3000 l/min: P1: 5 bar, P2: 3 bar, $\Delta p \leq 0,1$ bar.

Further information on request

Description

With high flow rate and large secondary relief port. Pneumatically controlled diaphragm pressure regulators with large secondary relief port for applications requiring an extremely accurate working pressure, especially at high flow rates. We recommend our »multifix« series of pilot controllers.

Additional information

1500 l/min: P1: 10 bar, P2: 7 bar, $\Delta p \leq 0,1$ bar.

Item

| Identification | Thread | Control range | A (mm) | B | C (mm) | D (mm) |
|----------------|--------|----------------------------|-----------|----------|-----------|-----------|
| K- 07 25 09 35 | G 1/2 | 0.05 - 7 bar (max. 10 bar) | 82,0 | 108.0 mm | 64,5 | 43,5 |

Spare parts

| | |
|--------------------------|--------------------------------------|
| K-HALTERBAUSATZ STANDARD | Holder |
| K-KM MS | Hexagonal lock nuts, brass |
| K-SCHALLDAEPFER VYON | Vyon silencers |
| K-FILTERELEMENT | Filter element |
| K-XV AGM 2 | Double nipples, parallel male thread |