

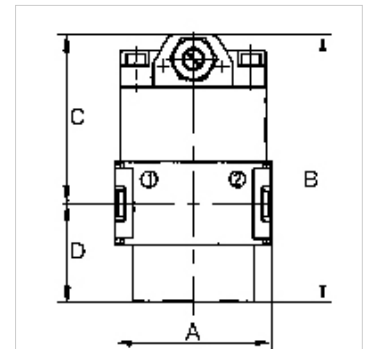
# K-ANFAV MULTIFIX MINI

## Start-up valves



### Properties

<b>Input pressure</b>	Min. 2.5 bar, max. 16 bar
<b>Media temperature</b>	max. 60 °C
<b>Ambient temperature</b>	Max. 60 °C
<b>Flow rate</b>	1600 l/min
<b>Sealant</b>	NBR
<b>Housing</b>	Die-cast zinc
<b>Flow rate measurement</b>	At P1 = 6 bar and pressure drop $\Delta p = 1$ bar



### Note

If several devices in the »multifix-mini« Series are assembled together, the maximum working pressure is 12 bar.  
Further information on request

### Description

Seat valves operated by secondary pressure for controlled pressurisation of pneumatic systems. The full cross-section of the regulator is opened at 50% of the input pressure. With adjustable restrictor!

### Item

Identification	Thread	A (mm)	B	C (mm)	D (mm)
K- 07 25 11 53	G 1/4	45,0	77.5 mm	48,5	29,0

### Accessories

K-HALTERBAUSATZ	Holder
-----------------	--------

### Spare parts

K-KOPPELPAKET MEHR	Coupling packet
--------------------	-----------------