

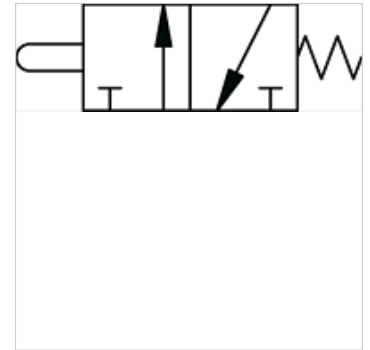
K-WMV 3/2 MANU DRUCKKNOPF

3/2-way miniature valves, manually operated, with pushbutton

HANSA FLEX

Properties

Operating principle	NC
Operating pressure	0.5 - 10 bar
Operating temperature	-10 °C to +60 °C
Flow rate 6bar and 5bar	35 NI/min
nominal Ø	2,5 mm
actuation pressure 6bar	8 N
Valve body	Aluminium
Pressure button	Nickel-plated brass
Spring	Stainless steel
Sealant	NBR



Note

Further information on request

Description

Monostable (non-latching) and bistable (latching) versions available.

Item

Identification	Connection	Operation	Washer
K- 07 15 00 50	4 mm side	monostable	Black
K- 07 15 00 51	4 mm side	monostable	Red
K- 07 15 00 52	M 5 side	monostable	Black
K- 07 15 00 53	M 5 side	monostable	Red