

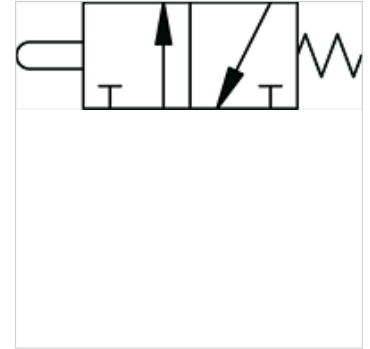
# K-WMV 3/2 MANU DREHKNOPF

3/2-way miniature valves, manually operated, with rotary knob (2 positions)

**HANSA FLEX**

## Properties

Operating principle	NC
Operating pressure	0.5 - 10 bar
Operating temperature	-10 °C to +60 °C
Flow rate 6bar and 5bar	35 NI/min
nominal Ø	2,5 mm
actuation pressure 6bar	8 N
Valve body	Aluminium
Pressure button	Nickel-plated brass
Spring	Stainless steel
Sealant	NBR



## Note

Further information on request

## Description

Monostable (non-latching) and bistable (latching) versions available.

## Item

Identification	Connection	Operation
K- 07 15 00 54	4 mm side	monostable
K- 07 15 00 55	M 5 side	monostable
K- 07 15 00 56	4 mm side	bistable
K- 07 15 00 57	M 5 side	bistable