

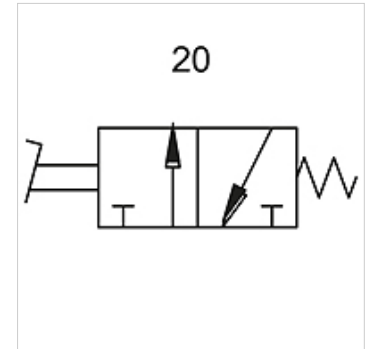
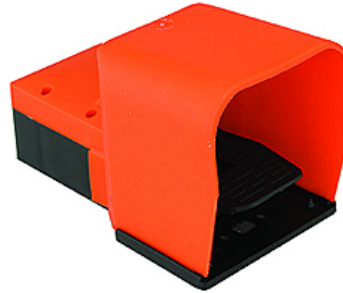
K-WFV 3/2 NICHT RASTEND FUS

3/2-way foot-operated valves (monostable, non-latching, with foot guard)

HANSA FLEX

Properties

Operating pressure	2.5 - 10 bar
Temp. range	-10 °C to +60 °C
Flow rate at 6,3 bar and 0,5 bar	60 NI/min (4 mm and M5), 640 NI/min (G 1/4)
Flow rate at 6,3 bar and 1 bar	95 NI/min (4 mm and M5), 840 NI/min (G 1/4)



Note

Further information on request

Description

Foot-operated valves, 3/2- and 5/2-way types, bistable or monostable (non-latching).

Item

Identification	Connection	circuit diagram number
K- 07 15 00 19	M 5	20
K- 07 15 00 20	4 mm	20