
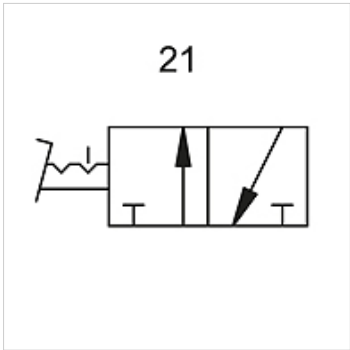
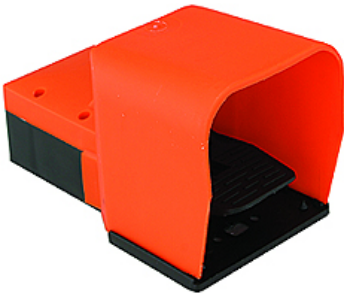


K-WFV 3/2 RASTEND FUS

3/2-way foot-operated valves (bistable, latching, with foot guard)



Properties	
Operating pressure	2.5 - 10 bar
Temp. range	-10 °C to +60 °C
Flow rate at 6,3 bar and 0,5 bar	60 NI/min (4 mm and M5), 640 NI/min (G 1/4)
Flow rate at 6,3 bar and 1 bar	95 NI/min (4 mm and M5), 840 NI/min (G 1/4)



Note
Further information on request

Description
Foot-operated valves, 3/2- and 5/2-way types, bistable or monostable (non-latching).

Item		
Identification	Connection	circuit diagram number
K- 07 15 00 21	M 5	21
K- 07 15 00 22	4 mm	21