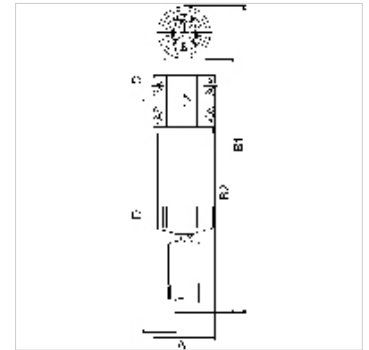


# K-VORFILTER M MANO

## Pre-filters with differential pressure gauge

### Properties

<b>Input pressure</b>	Min. 4 bar, Max. 16 bar
<b>display range differential pressure gauge</b>	0 - 2 bar
<b>Housing, filter container</b>	Aluminium
<b>Ambient temperature</b>	+5 °C to +60 °C
<b>Filter rating</b>	2,00 µm
<b>Particle separation</b>	2 µm
<b>Efficiency</b>	99.99 %
<b>Filter insert</b>	Polyethylene (with 45% cavity)
<b>Flow rate measurement</b>	At P1 = 6 bar and pressure drop $\Delta p = 0.5\%$



### Note

Further information on request

### Description

Suitable for all applications where the standard centrifugal separators do not afford the desired efficiency. The pre-filters and micro-filters are equipped with an automatic drain valve. All devices can be supplied with or without a differential pressure gauge. The differential pressure gauge indicates the degree of contamination of the filter element as a function of the pressure drop.

### Item

Identification	Thread	Flow rate (L/min)	A (mm)	B1 (mm)	B2 (mm)	C (mm)	D (mm)
K- 07 25 12 86	G 1/4	1000	82,5	407,0	335,0	57,0	353,0
K- 07 25 12 87	G 3/8	1000	82,5	407,0	335,0	57,0	353,0
K- 07 25 12 88	G 1/2	1000	82,5	407,0	335,0	57,0	353,0
K- 07 25 12 89	G 3/4	2000	82,5	477,0	405,0	57,0	493,0
K- 07 25 12 90	G 1	3000	118,0	492,0	420,0	72,0	458,0
K- 07 25 12 91	G 1 1/4	5300	118,0	592,0	520,0	72,0	658,0
K- 07 25 12 92	G 1 1/2	8300	118,0	692,0	620,0	72,0	858,0
K- 07 25 12 93	G 2	13000	118,0	882,0	810,0	72,0	1238,0

### Spare parts

<b>K-FILTERELEMENT SONDER</b>	Filter element
<b>K-VERBINDUNGSELEMENTE SOND</b>	Connecting sets
<b>K-HALTERBAUSATZ</b>	Holder
<b>K-DIFFERENZDRUCKMANOMETER</b>	Differential pressure gauge
<b>K-AUTOMAT ABLASSVENTIL</b>	Automatic drain valve