

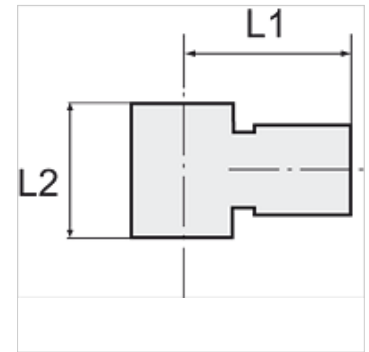
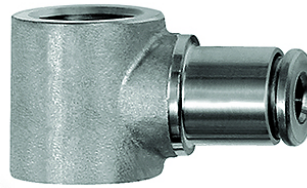
K-L-RINGSTUECK

Ring nipples, single

HANSA FLEX

Properties

Working pressure pulsate	Max. 10 bar
Pressure	Max. 15 bar (depending on pipe quality)
Suitable pipe materials	PVDF, PTFE, stainless steel, PA, PU
Standard	G thread acc. to DIN EN ISO 228-1
Ambient temperature	-20 °C to max. +150 °C (depending on pipe quality and diameter)
Material	Stainless steel 1.4404
Sealant	FKM



Note

Further information on request

Description

For use with aggressive media and in areas with corrosive outside influences, in the food processing industry and in hygienic and sanitary applications.

Item

Identification	Thread	for external hose Ø	L1 (mm)	L2 (mm)
K- 07 40 47 10	G 1/8	4 mm	19,5	15,0
K- 07 40 47 11	G 1/8	6 mm	22,0	15,0
K- 07 40 47 12	G 1/8	8 mm	22,5	15,0
K- 07 40 47 08	G 1/4	6 mm	23,5	17,0
K- 07 40 47 09	G 1/4	8 mm	24,0	17,0
K- 07 40 47 07	G 1/4	10 mm	27,0	17,0
K- 07 40 47 13	G 3/8	10 mm	29,0	20,0
K- 07 40 47 14	G 3/8	12 mm	31,0	20,0
K- 07 40 47 06	G 1/2	12 mm	33,0	24,0