

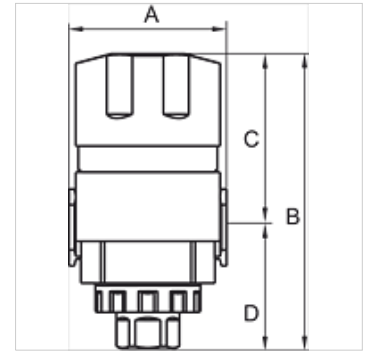
# K-3/2 ABSPERRVENTILE HW SCHL G-MINI

3/2-way shut-off valve

**HANSA FLEX**

## Properties

Input pressure	0 - 9 bar
Media temperature	max. 70 °C
Ambient temperature	Max. 70 °C
Vent port	G 1/4
Sealant	NBR
Housing	Die-cast aluminium
Toggle	Plastic
Flow rate measurement	At P1 = 8 bar, P2 = 6 bar and pressure drop $\Delta p$ = 1 bar
More information	User manual on request



## Item

Identification	Thread	Flow rate (L/min)	A (mm)	B	C (mm)	D (mm)	Size
K- 07 25 12 29	G 1/8	1750	38,0	89,0 mm	52,5	36,5	200
K- 07 25 12 30	G 1/4	1750	38,0	89,0 mm	52,5	36,5	200

## Accessories

K-VERBINDUNGSELEMENTE	Connecting sets
K-WANDHALTER	Wall bracket
K-HALTERBAUSATZ	Holder