

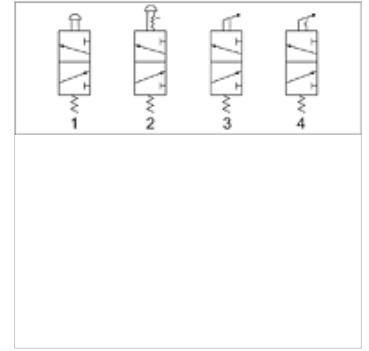
K-WV 3/2 MANU PILZTAST NOT SCHAL M3

3/2-way valve, manually operated, with mushroom pushbutton and emergency latch, NC, bistable, for panel mounting

HANSA FLEX

Properties

Operating pressure	0 - 10 bar
Temp. range	-20 °C to +70 °C
Flow rate measurement	At P1 = 8 bar, P2 = 6 bar and pressure drop Δp = 1 bar
Valve body	Aluminium alloy



Note

Further information on request

Item

Identification	Connection	Vent port	Flow rate (L/min)	switching lever color	circuit diagram number
K- 07 15 01 65	G 1/8	G 1/8	450	Red	2
K- 07 15 01 66	G 1/4	G 1/4	550	Red	2