

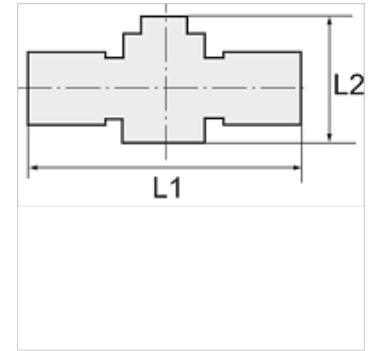
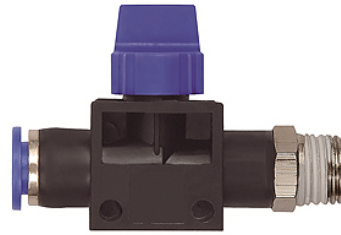
# K-WV 3/2 STECK GEW SCHL 2

3/2-way pilot valves with male thread and plug connection, flow direction from port to tube, conical male thread, coated

**HANSA FLEX**

## Properties

<b>Working pressure</b>	Max. 15 bar, coarse vacuum
<b>Application</b>	Air, vacuum
<b>Recommended hoses</b>	PU or PA (nylon)
<b>Media</b>	Compressed air and all gases or liquids that are compatible with the materials
<b>Temp. range</b>	-20 °C to +80 °C
<b>Sealing surface</b>	Parallel version: O-ring in housing, Conical version: thread coating
<b>Material</b>	Plastic, Nickel plated brass
<b>Contact pressure ring</b>	Plastic



## Note

Further information on request

## Description

Push-in fittings series manufactured in plastic and nickel-plated brass. All parts are suitable for use with hoses, tubes or pipes made of plastic and copper.

## Item

Identification	Thread	for external hose Ø	L1 (mm)	L2 (mm)	AF
K- 07 40 43 95	R 1/4	10 mm	72,6	46,0	17 mm
K- 07 40 43 99	R 1/8	6 mm	58,3	41,5	12 mm
K- 07 40 44 00	R 1/8	8 mm	58,9	41,5	14 mm
K- 07 40 43 97	R 1/4	6 mm	60,8	41,5	14 mm
K- 07 40 43 98	R 1/4	8 mm	60,9	41,5	14 mm
K- 07 40 43 96	R 1/4	12 mm	73,3	46,0	21 mm
K- 07 40 44 03	R 3/8	6 mm	62,3	41,5	17 mm
K- 07 40 44 04	R 3/8	8 mm	62,4	41,5	17 mm
K- 07 40 44 01	R 3/8	10 mm	73,6	46,0	17 mm
K- 07 40 44 02	R 3/8	12 mm	74,1	46,0	21 mm
K- 07 40 43 93	R 1/2	10 mm	77,1	46,0	21 mm
K- 07 40 43 94	R 1/2	12 mm	77,3	46,0	21 mm