

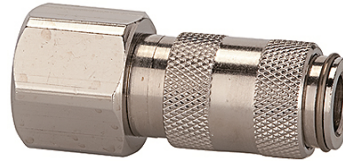
# K-SVKM NW 2,7 IG VA

Quick disconnect couplings DN 2.7, stainless steel 1.4404, female

**HANSA FLEX**

## Properties

<b>Operating pressure</b>	0 - 35 bar, maximum static working pressure (non-pulsating)
<b>Flow rate air</b>	165 l/min (at 6 bar and $\Delta p = 0.5$ bar)
<b>Media temperature</b>	-15 °C to +200 °C
<b>Housing, sleeve, valve body</b>	Stainless steel 1.4404
<b>Spring, snap ring, balls</b>	Stainless steel 1.4404
<b>Sealant</b>	FKM



## Note

Further information on request

## Description

One-hand quick disconnect couplings, one side sealing, extremely compact with a large bore and only a small pressure drop. Ideal for: Medical equipment, chemical and pharmaceutical industry, laboratories, plant construction and butchers.

## Item

Identification	Connection	Length (mm)	AF (mm)
K- 07 35 12 47	M 5 female	25,0	9
K- 07 35 12 48	G 1/8 female	28,0	12