

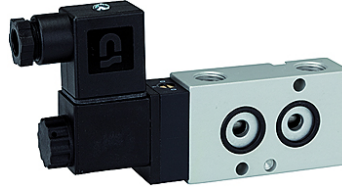
K-WV 3/2 LB NAMUR

3/2-way spool valves with NAMUR style interface, NC

HANSA FLEX

Properties

Media	Air, neutral gases, filtered
Working pressure	1.5 to 10 bar
Operating temperature	-20 °C to +70 °C
Electrical connection	Plug connector PG 9
content of delivery	Plug connector PG 9, 1 coding pin, 2 O-rings, 2 fixing screws
Power input	3 W=5 VA~
Housing	Aluminium, anodised
Slider	Stainless steel
Sealant	NBR



Note

Further information on request

Description

3/2 and 5/2-way spool valves, monostable, with air purging function and pneumatic spring return. With latching manual operator and optional outgoing air restriction.

Two or three-piece service units with excellent flow rates in modern design.
Lockable diaphragm pressure regulator with secondary ventilation, oil can be filled without interrupting operation.

Item

Identification	Voltage	Connection	DN	Flow rate (L/min)
K- 07 15 00 03	230 V, 50 Hz	G 1/4	7	1250
K- 07 15 00 04	24 V DC	G 1/4	7	1250