

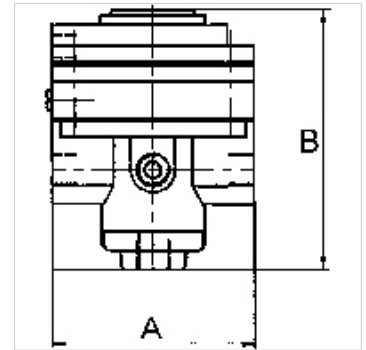
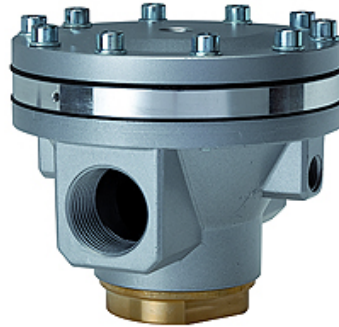
K-DRG PNEU FERNGESTEUERT

Pressure regulators pneumatic remote control

HANSA FLEX

Properties

Input pressure	Max. 25 bar
Output pressure	Acc. to pilot regulator
Media temperature	max. 80 °C
connection for pneumatic remote control	G 1/4
Operating temperature	Max. 80 °C
Sealant	NBR
Housing	Die-cast zinc (G1/2). Aluminium (G3/4 to G2)
Flow rate measurement	At P1 = 8 bar, P2 = 6 bar and pressure drop $\Delta p = 1$ bar



Note

Further information on request

Description

Diaphragm pressure regulators, self-relieving, with pneumatic remote control. The full functionality is assured in combination with a pilot regulator. We recommend using one of our precision or standard pressure regulators with a G 1/4 port as the pilot regulator. To design a closed control loop similar to the sketch below (K-07250511), please use our precision pilot regulator (feedback).

Item

Identification	Thread	Flow rate (L/min)	A (mm)	B
K- 07 25 05 05	G 1/2	5200	82,0	68.0 mm
K- 07 25 05 06	G 3/4	14000	117,0	108.0 mm
K- 07 25 05 07	G 1	14000	117,0	108.0 mm
K- 07 25 05 08	G 1 1/4	35000	125,0	122.0 mm
K- 07 25 05 09	G 1 1/2	35000	125,0	122.0 mm
K- 07 25 05 10	G 2	50000	160,0	197.0 mm

Accessories

K-HALTERBAUSATZ STANDARD Holder