

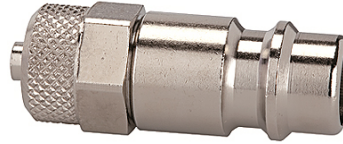
# K-NIPPEL KUPPL NW7 SCHL MS NI

Plugs for couplings DN 7.2 - DN 7.8, nickel-plated brass, for hose

**HANSA FLEX**

## Properties

|                           |   |
|---------------------------|---|
| <b>Operating pressure</b> | 0 - 35 bar, maximum static working pressure (non-pulsating) |
| <b>Media temperature</b>  | -20 °C to +100 °C   |
| <b>Material</b>           | Nickel-plated brass   |



## Note

Further information on request

## Item

| Identification | Designation        | AF<br>(mm) |
|----------------|--------------------|------------|
| K- 07 35 01 85 | Plug for hose 6x4  | 12         |
| K- 07 35 01 86 | Plug for hose 8x6  | 14         |
| K- 07 35 01 87 | Plug for hose 10x8 | 17         |

## Additional element for following products

|                          |   |
|--------------------------|---|
| K-SVKM NW 7,8 AG H       | Quick disconnect couplings DN 7.8 - for extremely high flow rates, male           |
| K-SVKM NW 7,8 IG H       | Quick disconnect couplings DN 7.8 - for extremely high flow rates, female         |
| K-SVKM NW 7,8 SCHL TUE H | Quick disconnect couplings DN 7.8 - for extremely high flow rates, with hose stem |
| K-LKM S NW7,8 AG         | Safety couplings DN 7.8, male   |
| K-LKM S NW7,8 IG         | Safety couplings DN 7.8, female   |
| K-LKM S NW7,8 SCHL TUE   | Safety couplings DN 7.8, with hose stem   |