

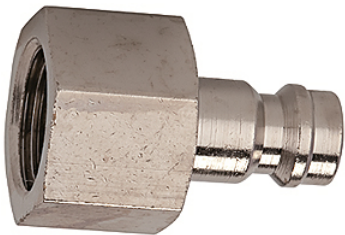
# K-NIPPEL NW5 IG MS NI

Plugs DN 5, nickel-plated brass, female



## Properties

Operating pressure	0 - 35 bar, maximum static working pressure (non-pulsating)
Media temperature	-20 °C to +100 °C
Material	Nickel-plated brass



## Note

Further information on request

## Item

Identification	Designation	AF (mm)
K- 07 35 01 42	Plug G 1/8 female	14
K- 07 35 01 44	Plug G 1/4 female	17
K- 07 35 01 43	Plug G 3/8 female	19