

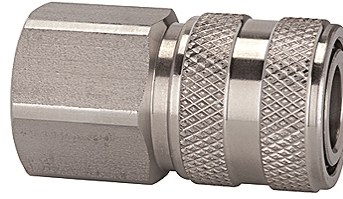
K-SVKM NW 7,2 IG VA

Quick disconnect couplings DN 7.2, stainless steel, female

HANSA FLEX

Properties

Operating pressure	1 - 35 bar and rough vacuum
Flow rate air	1.000 l/min (at 6 bar and $\Delta p = 0.5$ bar)
Media temperature	-25 °C to +200 °C
Housing, sleeve, valve body	Stainless steel 1.4305
Spring, snap ring	Stainless steel 1.4310
Locking pins	Stainless steel 1.4401
Sealant	FKM



Note

Further information on request

Description

Classic standard coupling type, one side sealing, made of stainless steel. The closed sleeve protects the coupling from dirt. We recommend the use of stainless steel plugs and stems!

Item

Identification	Connection	Length (mm)	AF (mm)
K- 07 35 07 62	G 1/4 female	43,0	22
K- 07 35 07 63	G 3/8 female	43,0	22
K- 07 35 07 64	G 1/2 female	46,0	24

Additional elements

K-NIPPEL KUPPL NW7 AG VA 2	Plugs for couplings DN 7.2 - DN 7.8, stainless steel 1.4305, male
K-NIPPEL KUPPL NW7 IG VA 1	Plugs for couplings DN 7.2 - DN 7.8, stainless steel 1.4305, female
K-TUE 7,2 7,8 VA 2	Stems for couplings DN 7.2 - DN 7.8, stainless steel 1.4305