

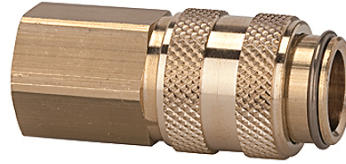
K-SVKM NW 5 ABSP IG MS

Quick disconnect couplings DN 5, both sides sealing, brass, female

HANSA FLEX

Properties

Operating pressure	0 - 35 bar, maximum static working pressure (non-pulsating)
Flow rate air	310 l/min (at 6 bar and $\Delta p = 0.5$ bar)
Media temperature	-20 °C to +100 °C
Housing, sleeve, valve body	Brass
Spring, snap ring, balls	stain less steel
Sealant	NBR



Note

Further information on request

Description

Both the coupling and the self-sealing plug are fitted with a valve. Connection: Both valves open and the medium is allowed to pass. Disconnection: Both valves close and the medium is prevented from escaping.

Item

Identification	Connection	Length (mm)	AF (mm)
K- 07 35 06 75	G 1/8 female	38,0	14
K- 07 35 06 76	G 1/4 female	38,0	17