

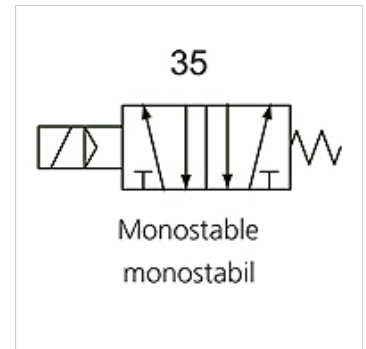
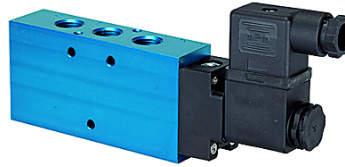
# K-WV 5/2 EINS ELEKTRO

5/2-way spool valves, single solenoid

**HANSA FLEX**

## Properties

<b>Operating principle</b>	5/2-way
<b>Operating pressure</b>	2.5 - 10 bar; Max. vacuum 10 bar (external pilot air)
<b>min. working pressure</b>	2,5 bar
<b>Temp. range</b>	-10 °C to +60 °C
<b>Flow rate 6bar and 10bar</b>	1500 NI/min (G 1/4), 4600 NI/min (G 1/2)
<b>Electrical connection</b>	Coupler plug PG 9 - form B
<b>Protection IP</b>	IP 65 (DIN 46244)
<b>Housing</b>	Anodised aluminium, blue
<b>Piston gate valve</b>	Stainless steel
<b>Sealant</b>	NBR



## Note

Further information on request

## Description

This valve design, featuring the Tapered Tee Seal®, offers the ability to run without lubrication and supports almost any compressed air quality. The valves are largely resistant to dirt and can thus also be used under extreme conditions without any problems. Leakage is now a thing of the past and the spool no longer sticks, even after long idle periods.

## Item

Identification	Connection	Voltage	DN	circuit diagram number	Control
K- 07 15 02 21	G 1/4	24 V DC	8	35	
K- 07 15 02 22	G 1/2"	24 V DC	15	35	
K- 07 15 02 23	G 1/4	230 V AC, 50 Hz	8	35	
K- 07 15 02 24	G 1/2"	230 V AC, 50 Hz	15	35	