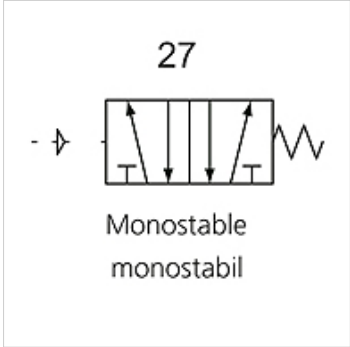
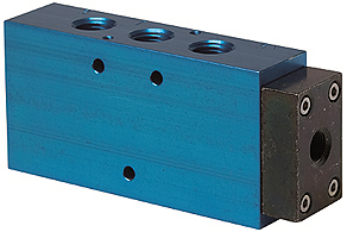


# K-WV 5/2 EINS PNEU

5/2-way spool valves, single pneumatic



Properties	
Operating principle	5/2-way
Operating pressure	2.5 - 10 bar; Max. vacuum 10 bar (external pilot air)
min. working pressure	2,5 bar
Temp. range	-10 °C to +60 °C
Flow rate 6bar and 10bar	1500 NI/min (G 1/4), 4600 NI/min (G 1/2)
Electrical connection	Coupler plug PG 9 - form B
Protection IP	IP 65 (DIN 46244)
Housing	Anodised aluminium, blue
Piston gate valve	Stainless steel
Sealant	NBR



**Note**  
Further information on request

**Description**  
This valve design, featuring the Tapered Tee Seal®, offers the ability to run without lubrication and supports almost any compressed air quality.  
<br>The valves are largely resistant to dirt and can thus also be used under extreme conditions without any problems. <br>Leakage is now a thing of the past and the spool no longer sticks, even after long idle periods.

Item				
Identification	Connection	DN	circuit diagram number	Control
K- 07 15 02 17	G 1/4	8	27	
K- 07 15 02 18	G 1/2"	15	27	