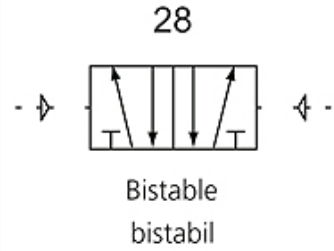
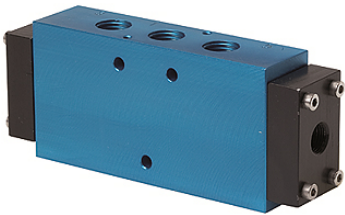


K-WV 5/2 BEIDS PNEU

5/2-way spool valves, double pneumatic



Properties	
Operating principle	5/2-way
Operating pressure	2.5 - 10 bar; Max. vacuum 10 bar (external pilot air)
min. working pressure	2,5 bar
Temp. range	-10 °C to +60 °C
Flow rate 6bar and 10bar	1500 NI/min (G 1/4), 4600 NI/min (G 1/2)
Electrical connection	Coupler plug PG 9 - form B
Protection IP	IP 65 (DIN 46244)
Housing	Anodised aluminium, blue
Piston gate valve	Stainless steel
Sealant	NBR



Note
Further information on request

Description
This valve design, featuring the Tapered Tee Seal®, offers the ability to run without lubrication and supports almost any compressed air quality. The valves are largely resistant to dirt and can thus also be used under extreme conditions without any problems. Leakage is now a thing of the past and the spool no longer sticks, even after long idle periods.

Item				
Identification	Connection	DN	circuit diagram number	Control
K- 07 15 02 19	G 1/4	8	28	
K- 07 15 02 20	G 1/2"	15	28	