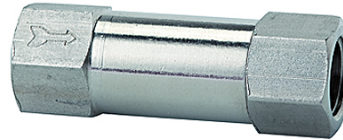


K-RD DURCHGANGSFORM VA

Non-return valves - Straight-way type stainless steel

Properties

Operating pressure	2 - 10 bar
Operating temperature	-10 °C to +150 °C
Opening pressure	0.2 bar
Spring	Stainless steel 1.4319
Housing	Stainless steel 1.4404
O-ring	FKM (FPM)



Note

Further information on request

Item

Identification	Thread	Length (mm)	Opening pressure (bar)	AF (mm)
K- 07 30 24 28	G 1/8	40,0	0,2	13
K- 07 30 24 29	G 1/4	48,0	0,2	16