

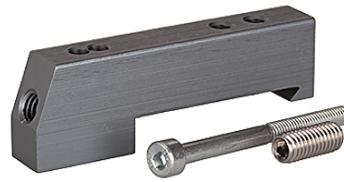
K-ADA HUTPROFIL

Adapter for DIN rail

HANSA FLEX

Properties

Media	Filtered, unlubricated or lubricated compressed air. If lubrication is used, it must be continuous.
Working pressure	Max. vacuum 10 bar (external pilots), 3 to 7 bar (internal pilots as standard)
Pilot pressure	3 - 7 bar
Temp. range	-10 °C to +60 °C
Flow rate	200 NI/min (Ø 4), 500 NI/min (Ø 6), 800 NI/min (Ø 8)
No. of pilots	Max. 16 (e.g. 16 spring return valves)
Manual control	Latching (bistable), Monostable (non-latching) version also available on request
Power input	0.6 W per pilot
Protection IP	IP 65



Note

Further information on request

Description

These compact valve terminals, with a maximum flow rate of 800 NI/min, can be individually adapted to the specific conditions of each application thanks to the wide range of functions and various input and intermediate plates. Since each valve terminal is a customer-specific combination of a series of individual elements, the catalogue only lists the available input, intermediate and end plates as well as the different valve discs and the 25-pin multi-pole connectors.

Additional information

Important: The scope of supply does not include a connector. Please order separately.

Item

Identification	Designation
K- 07 15 22 43	Adapter for DIN rail