

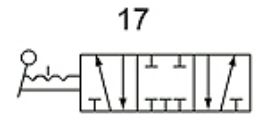
K-WV 5/3 HANDHEBEL MITTELST 4H

5/3-way valve, operated by hand lever, mid-position closed, latching

HANSA FLEX

Properties

Operating pressure	0 - 8 bar
Temp. range	-20 °C to +70 °C
Flow rate measurement	At P1 = 8 bar, P2 = 6 bar and pressure drop Δp = 1 bar
Valve body	Aluminium alloy



Stable for 5/3,
mid-position closed
stabil für 5/3,
Mitte geschlossen

Note

Further information on request

Item

Identification	Output	Input	Vent port	Flow rate (L/min)	circuit diagram number
K- 07 15 04 17	G 1/8	G 1/8	G 1/8	750	17
K- 07 15 04 18	G 1/4	G 1/4	G 1/8	850	17
K- 07 15 04 19	G 1/4	G 1/4	G 1/4	1300	17
K- 07 15 04 20	G 3/8	G 3/8	G 1/4	1500	17