

K-WV 5/3 ELEKTROPNEU ZENT GESCHL 4V

5/3-way pilot valve, mid-position closed

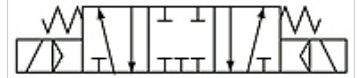
HANSA FLEX

Properties

| | |
|-----------------------|--|
| Operating pressure | 1.5 - 8 bar |
| Temp. range | -20 °C to +70 °C |
| Flow rate measurement | At P1 = 8 bar, P2 = 6 bar and pressure drop Δp = 1 bar |
| Electrical connection | Connector Type B acc. to ISO 4400 |
| min. working pressure | 1,5 bar |
| Protection IP | IP 65 |
| Valve body | Aluminium alloy |



37



Mid-position closed
Zentrum geschlossen

Note

Further information on request

Item

| Identification | Connection | Vent port | Flow rate (L/min) | circuit diagram number | Voltage | Size |
|----------------|------------|-----------|-------------------|------------------------|--------------|------|
| K- 07 15 03 75 | M 5 | M 5 | 250 | 37 | 24 V DC | 100 |
| K- 07 15 03 76 | G 1/8 | G 1/8 | 400 | 37 | 24 V DC | 100 |
| K- 07 15 03 77 | G 1/8 | G 1/8 | 550 | 37 | 24 V DC | 200 |
| K- 07 15 03 78 | G 1/4 | G 1/8 | 550 | 37 | 24 V DC | 200 |
| K- 07 15 03 79 | G 1/4 | G 1/4 | 950 | 37 | 24 V DC | 300 |
| K- 07 15 03 80 | G 3/8 | G 1/4 | 950 | 37 | 24 V DC | 300 |
| K- 07 15 03 81 | G 1/2" | G 1/2 | 1600 | 37 | 24 V DC | 400 |
| K- 07 15 03 82 | M 5 | M 5 | 250 | 37 | 230 V, 50 Hz | 100 |
| K- 07 15 03 83 | G 1/8 | G 1/8 | 400 | 37 | 230 V, 50 Hz | 100 |
| K- 07 15 03 84 | G 1/8 | G 1/8 | 550 | 37 | 230 V, 50 Hz | 200 |
| K- 07 15 03 85 | G 1/4 | G 1/8 | 550 | 37 | 230 V, 50 Hz | 200 |
| K- 07 15 03 86 | G 1/4 | G 1/4 | 950 | 37 | 230 V, 50 Hz | 300 |
| K- 07 15 03 87 | G 3/8 | G 1/4 | 950 | 37 | 230 V, 50 Hz | 300 |
| K- 07 15 03 88 | G 1/2" | G 1/2 | 1600 | 37 | 230 V, 50 Hz | 400 |