

# K-STECKVERBINDU MINI

Unions, mini

**HANSA FLEX**

## Properties

**Working pressure** Max. 10 bar, vacuum

**Application** Air, vacuum

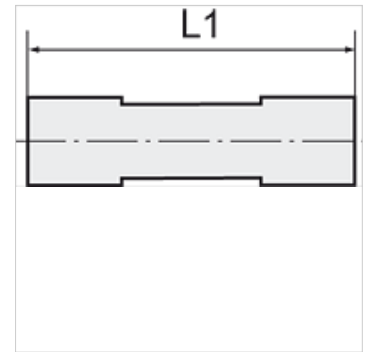
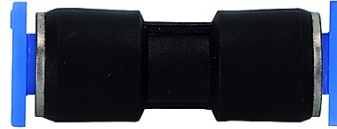
**Recommended hoses** PU or PA (nylon)

**Media** Compressed air

**Temp. range** 0 °C to +60 °C

**Material** Plastic, Nickel plated brass

**Contact pressure ring** Plastic



## Note

Further information on request

## Description

Push-in fittings series manufactured in plastic and nickel-plated brass, space-saving miniature design.

## Item

Identification	for external hose $\varnothing$	L1 (mm)
K- 07 40 23 81	3 mm	21,0
K- 07 40 23 82	4 mm	26,5
K- 07 40 23 83	6 mm	27,5